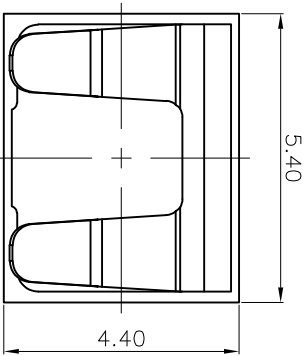
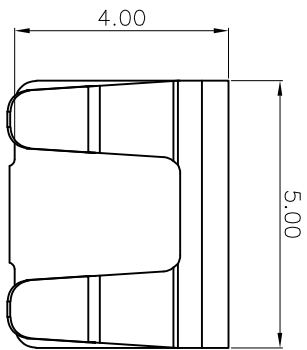
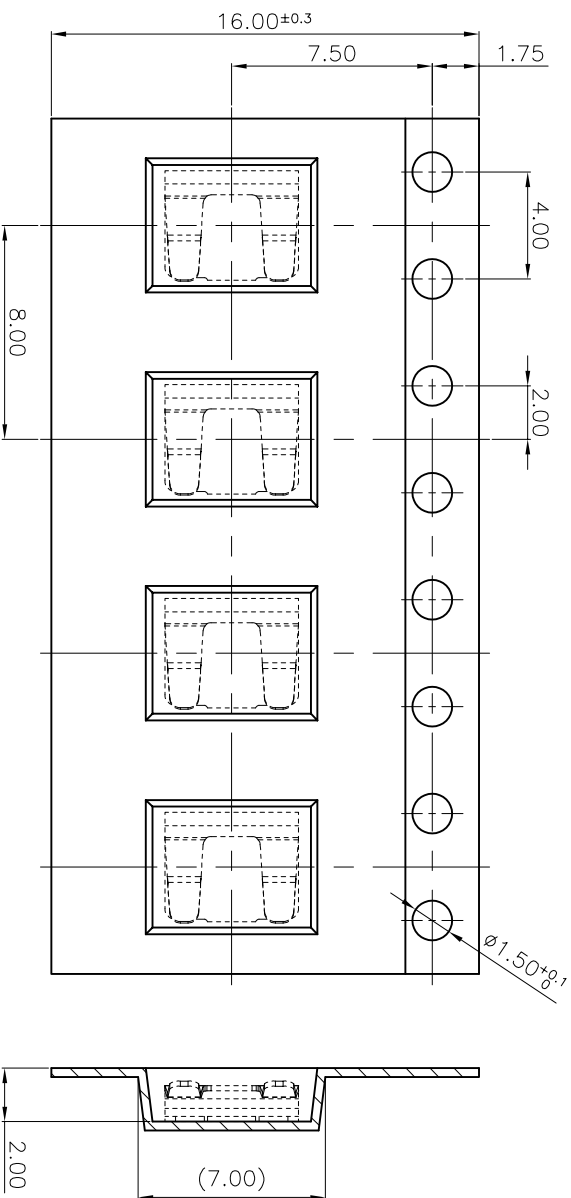
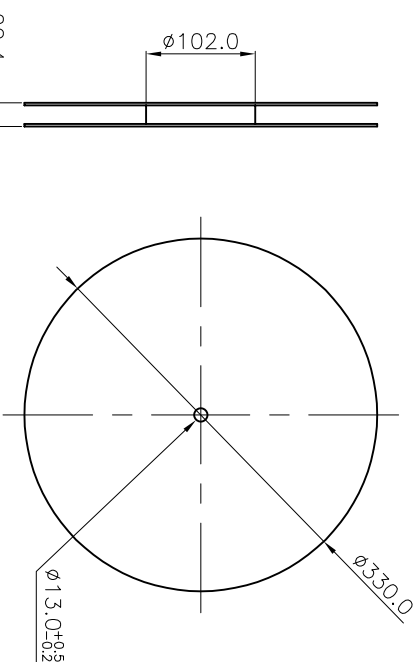
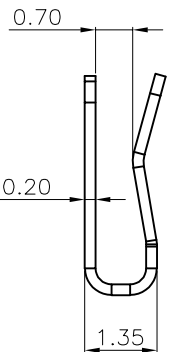


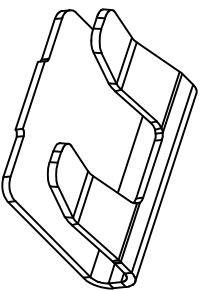
NO.	CHANGE CONTENTS	REVISION	CHANGE CAUSE
-----	-----------------	----------	--------------



RECOMMENDED PCB LAYOUT
S=10:1



Reel Bobbin
S=1:5



- NOTE:
 1. Material : PHOSPHOR BRONZE
 2. FINISH : 3μm 100% TIN OVER 2μm NI
 3. CAPACITY MAX : 2 x φ0.9mm WIRES

No.	PART NO.	DESCRIPTION	Q'TY	MATERIAL	REMARKS	REV.
MATERIAL	*SEE NOTE.1	DRAW	DESIGN CHECK	APPRO.	TITLE	
FINISH	*SEE NOTE.2				AWG32 CABLE CLIP	
TOLERANCE	Decimal	Angle			Part No.	
SCALE	10 / 1 UNIT	mm	0.3 / 10		GUSSZA3	
REVISION	A0	SHEET	1	MODEL	MG210	A3

